

# Swivel castor ED 300 ZK

Extra Heavy Duty Series ED - Wheel Z

-30 °C - +80 °C

+++  
swivels easily

+++  
wear resistant

+++  
shock proof

+++  
floor protective

+++  
weather proof

## Wheel



Tread: Cast polyurethane, 95±3 Shore A

Wheel centre, Cast-iron - painted

## Fork

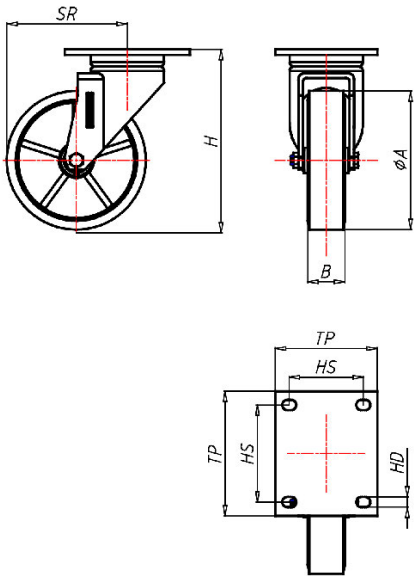


For applications where a super strong and durable caster is required,  
one tapered roller and one axial ball bearing,  
dust protection ring,  
very strong integrated Kingpin,  
locked nut, grease nipple, wheel axle bolted,  
finish – painted

Swivel castor	Wheel-Ø A x width B mm: 300x70
Load Capacity kg:	1800
Load capacity tested according to EN 12530 and EN 12527	
Overall height H mm:	350
Dimension of top plate TP mm:	200x160
Hole spacing HS mm:	160x120
Hole-Ø HD mm:	15
Swivel radius SR mm:	249
Wheel bearing:	Ball bearing

## Advantages

- ✓ silent in motion
- ✓ low rolling resistance
- ✓ high abrasion and tear resistance
- ✓ high resistance to shocks
- ✓ good chemical resistance



## Applications

- Metal-Technology
- Heavy duty dollies
- Trash container trucks
- Machinery moving dollies
- Workshops
- Racks
- Building-Industry
- Carpentry